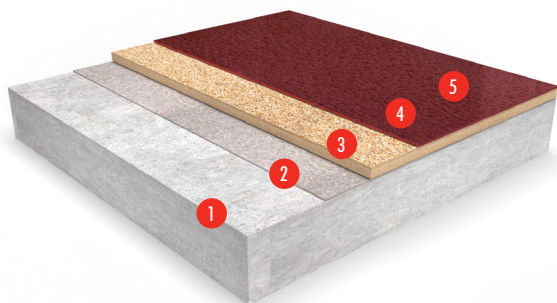


Deckshield ID (2 - 3 mm)

A flexible and durable polyurethane for use on intermediate car park decks. Ensuring safety underfoot with enhanced traction.



- 1 Prepared Substrate
- 2 Hydraseal DPM, scattered Natural Quartz (optional)
- 3 Deckshield SF + Deckshield SF Filler C or Natural Quartz, Scattered Natural Quartz
- 4 Deckshield Finish
- 5 Deckshield UV Topcoat (optional)



Slip Resistant:

Positively textured anti-slip surface minimises slip and skid risks.



Chemical Resistant:

Protects against diesel, fuel, antifreeze, hydraulic fluid, chlorides & battery acid.



Temperature Resistant:

Softens over 70°C and hardens on cooling.



Noise Reduction:

Enhanced traction underfoot minimises unpleasant noise from tyre squeal.

Tested to EN1504-2 test standards for the surface protection of concrete

REACTION TO FIRE	
EN 13501-1	B _{fl} -s1
SLIP RESISTANCE	
UNE-EN 13036-4	Class I: > 40 Wet Test
BOND STRENGTH	
Measurement of Bond Strength by Pull-off	
EN 1542	> 1.5 N/mm ²
ABRASION RESISTANCE (Taber)	
UNE-EN ISO 5470-1	Weight loss < 3000 mg
IMPACT RESISTANCE	
UNE-EN ISO 6272-1	Class III: > 20 Nm
RESISTANCE TO SEVERE CHEMICAL ATTACK	
UNE-EN 13529 Group 1, 3 & 10	No defects & reduction in Shore Hardness < 50%
WATER VAPOUR TRANSMISSION	
UNE-EN ISO 7783	Class II: 5 ≤ Sd ≤ 50 m
LIQUID WATER PERMEABILITY	
UNE-EN 1062-3	< 0.1 Kg/m ² × h ^{0.5}
CARBON DIOXIDE PERMEABILITY	
UNE-EN ISO 7783	> 50 m
ADHESION AFTER THERMAL COMPATIBILITY	
With De-icing Salt Immersion & Thunder Shower Cycling	
UNE-EN 13687-1&2	> 1.5 MPa

SPEED OF CURE	10°C	20°C	30°C
Light Traffic	30 hrs	16 hrs	10 hrs
Full Traffic	36 hrs	24 hrs	16 hrs
Full Chemical Cure	12 days	7 days	5 days

Typical properties achieved in laboratory tests at 20°C and at 50% Relative Humidity for a model specification.

Model Specification

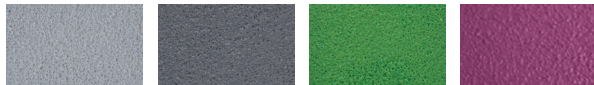
System	Deckshield ID
Finish	Gloss
Thickness	2 - 3 mm

Preparatory work and application in accordance with manufacturer's instructions.

Products Included In This System

Primer (optional)	Hydraseal DPM @0.5 kg/m ² scattered with Natural Quartz 0.3 - 0.8 mm @ 0.5 kg/m ²
Wearing Layer	Deckshield SF @ 0.75 kg/m ² + Deckshield SF Filler C or Natural Quartz 0.1-0.4 mm @ 0.25 kg/m ² Scattered Natural Quartz 0.3 - 0.8 mm @ 2.5 kg/m ²
Topcoat	Deckshield Finish @ 0.65 kg/m ²
Topcoat (optional)	Deckshield UV Topcoat @ 0.15 kg/m ²

Standard Colours

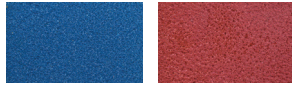


Mid Grey
(near RAL 7037)

Dark Grey
(near RAL 7043)

Grass Green
(near RAL 6010)

Traffic Purple
(near RAL 4006)



Traffic Blue
(near RAL 5017)

Tomato Red
(near RAL 3013)

The applied colours may differ from the examples shown.
For a full colour chart and samples, contact your local Flowcrete office.

Substrate Requirements

Concrete or screed substrate should be a minimum of 25 N/mm², free from laitance, dust and other contamination. For the use of Deckshield SF, Substrate should be dry to 75% RH as per BS8203 (4.5% on Tramex scale) and free from rising damp and ground water pressure. If no damp proof membrane is present Hydraseal DPM can be incorporated directly beneath the Deckshield SF. The system is designed to cope with construction moisture but is not designed to resist hydrostatic water pressure.

Tremco CPG UK Ltd products are guaranteed against defective materials and manufacture and are sold subject to its standard Terms and Conditions of Sale, copies of which can be obtained on request. Any suggested practices or installation specifications for the composite floor or wall system (as opposed to individual product performance specifications) included in this communication (or any other) from Tremco CPG UK Ltd constitute potential options only and do not constitute nor replace professional advice in such regard. Tremco CPG UK Ltd recommends any customer seek independent advice from a qualified consultant prior to reaching any decision on design, installation or otherwise.

System Datasheet written for Tremco CPG UK Ltd. Please consult Technical Team in your own country region for specific details. [21/09/23, 01 UK]

In such circumstances external tanking or pressure relief, by e.g. directed drainage, must be provided to the structure.

Installation Service

The installation should be carried out by a Deckshield approved contractor with a documented quality assurance scheme. Obtain details of our approved contractors by contacting our customer service team or enquiring via our website www.flowcrete.eu.

Aftercare, Cleaning & Maintenance

Clean regularly using a single or double headed rotary scrubber drier in conjunction with a mildly alkaline detergent.

Note

No resin system is totally colour fast and may change colour over time (exhibits a yellowing effect). Colour change depends on the UV light and heat levels present and hence the rate of change cannot be predicted. This is more noticeable in very light colours but does not compromise the product's physical or chemical resistance characteristics. We have endeavoured to adopt colours within our standard range which minimise this change.

Environmental Considerations

The finished system is assessed as non-hazardous to health and the environment. The long service life and seamless surface reduce the need for repairs and maintenance. Environmental and health considerations are controlled during manufacture and application of the products by Tremco CPG staff and fully trained application teams.

Important Notes

Tremco CPG products are guaranteed against defective materials and manufacture and are sold subject to our standard 'Warranty, Terms and Conditions of Sale', copies of which can be obtained on request. Warranty does not cover suitability, fit for purpose or any consequential or related damages. Please review warranty in detail before installing the products.